

Dear Reader,

There is nothing more powerful than an idea whose time has come.

A new appetite is building for design that makes a difference, for design that is a tool for making a more equitable world. Join us and presenters from thirty-two (32) nations in Rio de Janeiro in

December to exchange ideas and build an inclusive agenda for 21st century design and development. We expect 800 delegates from at least fifty (50) nations. We feel a sense of excitement and a sense of urgency.

The new century is characterized by increasing conflicts and extreme differences in wealth and more information than we can manage – but also by extraordinary opportunity. In the developed world we have learned how to use design to meet a new reality of longer lives and more diversity of ability. In the majority world, where more than 80% of people with disabilities live and where longer lives are the first measure of progress, people are beginning to demand and invent new solutions. We need to talk to and listen to one another. If we do, we can hope to make design-for-all the standard of good design in all parts of the world.

Please join us. It's time.

Sincerely,

Valerie Fletcher & Jim Sandhu

Conference Co-Chairs



Adaptive Environments
Human Centered Design

374 Congress Street
Suite 301
Boston, MA 02210 USA
617-695-1225 v/tty
617-482-8099 fax
info@AdaptiveEnvironments.org
www.AdaptiveEnvironments.org

This brochure is available in Braille and on computer diskette upon request. It can also be emailed to you as a text or PDF file. Email all requests to: agomez@AdaptiveEnvironments.org

374 Congress Street
Suite 301
Boston, MA 02210
USA

Non Profit Org.
U.S. Postage
PAID
Permit No. 52484
Boston, MA



© 2004 Adaptive Environments and its licensors. All rights reserved



Adaptive Environments

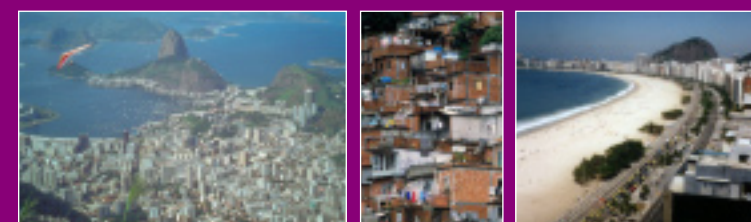
Desenhando Para o Seculo 21
Diseño Para el Siglo 21
Dessin Pour Le 21e Siècle
21 3

Designing For The 21st Century III

An International Conference on Universal Design
Rio de Janeiro | 7-12 December | 2004



Program Registration Information



Who is Behind the Conference

Lead Sponsor

Adaptive Environments; a 25 year old international educational non-profit organization based in the U.S. committed to advancing the role of design in expanding opportunity and enhancing experience for people of all ages and abilities.

Host Sponsor

Centro de Vida Independente do Rio de Janeiro (CVI-Rio), first independent living center in Latin America.
Lilia Pinto Martins, Presidente, Veronica Camisao, Architect and Conference Liaison

Media Sponsor

Metropolis, the premier cross-disciplinary design magazine in the U.S.

Co-Sponsors

International Association for Universal Design
NEC Foundation of America
Universal Design Consortium (Japan)
UN Global Programme on Disability
Fundacion ONCE

Conference Co-Chairs

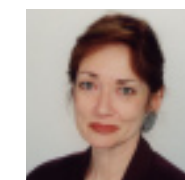
Valerie Fletcher
Jim Sandu

Chair, Student Design Competition

Ricardo Gomes

Co-Chairs, International Educators' Forum

Elaine Ostroff
Marcelo Guimaraes



Valerie Fletcher



Jim Sandu



Frances Aragall



Roger Coleman



Jean-Pierre Gonnot



Judy Heumann



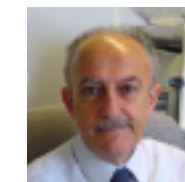
Jamie Lerner



Patricia Moore



Susan Szenasy



Riadh Tappuni



Kazuo Toda



CJ Walsh



Leslie Kanes Weisman



John Zeisel, Ph.D.

Keynote Presenters & Keynote Plenary Speakers:

Francesc Aragall
President, Design-for-All Foundation (Spain)

Singanapillai Balaram
Principal Designer and Senior Professor at the National Institute of Design (India)

Roger Coleman
Co-Director of the Helen Hamlyn Research Centre at the Royal College of Art (UK)

Jean-Pierre Gonnot,
Chief, Inclusive Development Section, DESA, UN

Carlos Rubén Fernández Gutierrez
President of Fundación ONCE
General Secretary of CERMI (Spanish Council of Disabled Representatives)
Member of the Social Policy Committee of EDF (European Disability Forum) (Spain)

Judy Heumann
World Bank, Advisor on Disability and Development (USA)

Jaime Lerner
President, International Union of Architects, former Mayor of Curitiba and Governor of Paranha (Brazil)

Patricia Moore
President, Moore Design Associates (USA)

Jim Sandhu
Principal, Inclusive Design Research Associates Limited (UK)

Susan Szenasy
Editor-in-Chief, Metropolis magazine (USA)

Riadh Tappuni, Ph.D.
UN Senior Urban Development Officer (Lebanon)

Kazuo Toda
Executive Vice President, Matsushita Electric Industrial Co., Ltd.

C.J. Walsh
Chief Technical Consultant, Sustainable Design International Ltd., (Ireland)

Leslie Kanes Weisman
Professor Emeritus, New Jersey Institute of Technology and author (USA)

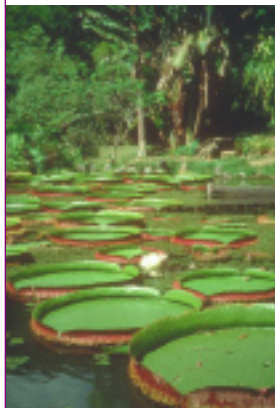
John Zeisel, Ph.D.
President of Hearthstone Alzheimer Care, author, advisor to the AIA Institute on Neuroscience and Architecture (USA)

Conference Location Rio de Janeiro, Brazil

Rio is a stunningly beautiful, internationally renowned city of 5.5M recently named the “world’s friendliest city” (BBC News 23. 6.03). Rio de Janeiro has substantial experience with universal design and with hosting accessible conferences. There is capacity in the hotels, conference facilities, in transportation and in technology to host a diverse audience.

Brazil is the fifth largest economy and the sixth largest population in the world at 182M. Portuguese is the official language. Brazil’s internal economic and social disparities mirror the world’s, where gaping inequities and rapid growth pose a challenge for design’s potential as a tool of development that delivers opportunity to everyone.

There is evidence that Brazil is embracing the potential. A number of Brazilian cities are making an effective case for universal design from a social justice perspective. Innovative Brazilian leaders are shaping public policy and finding ways to excite ordinary citizens about design-for-all as intrinsic to sustainable development.



Conference Overview

The number and caliber of presenters is extraordinary. Throughout the Pre-Conference Intensive Sessions and the Core Conference the most accomplished universal design experts and emerging leaders from around the globe will share their experience and ideas. Sessions are tailored to provide depth on a wide range of topics for audiences ranging from 15 to 250.

A limited number of keynote sessions will bring all of the delegates together for presentations about issues and strategies that are of interest across topics and design disciplines.

Language of the Conference

Conference delegates are expected from at least 50 nations. Globally, English is the dominant language in over 60 nations and commonly understood as the lingua franca of the present time. However, Designing for the 21st Century III is about dialogue across cultures. Brazilians speak Portuguese and the rest of the hemisphere speaks Spanish. All Pre-Conference sessions and as many Core Conference sessions as possible will be simultaneously translated into Portuguese, and to the maximum extent possible, also into Spanish.



Collaborating Organizations

AIGA - American Institute of Graphic Arts
Architects for Humanity
Architecture + Association on Higher Education and Disability
Boston Society of Architects
Center for Inclusive Design and Environmental Access
Center for International Rehabilitation Research Information and Exchange
Centro de Investigación y Asesoramiento para el Hábitat Gerontológico
Center for Universal Design
Danish Centre for Accessibility
Design for All Foundation
Disabled Peoples’ International
Ecocity Builders
The European Institute for Design and Disability
Green Map System
The Helen Hamlyn Research Centre at the Royal College of Art
The Hong Kong Institute of Architects
Industrial Designers Society of America
International Association for Humane Habitat
The International Committee of the Japanese Association for an Inclusive Society
International Federation on Ageing
Lighthouse International
Mobility International USA
National Center for Accessible Media
The Royal Architectural Institute of Canada
The Royal Australian Institute of Architects
The Royal Society of Arts
SACI Network
Sensory Trust
Shekel, Israel Center for Accessibility
Universal Design Newsletter
U.S. Access Board
World Bank, Disability and Development
World Institute on Disability

Topic Areas

Arts & Cultural Environments
Commercial & Retail Environments
Consumer Products
Design Education
Educational Environments
Educational Policies or Programs
Educational Curriculum
Environments for Children & Youth
Environments for Older People
Information Design (print and web)
Green Space (parks, urban open space, wilderness)
Health Care Environments
Health Care Policies and Programs
Housing Design
Housing Policy and Programs
Technology
Technology Policy
Public Policy
Public & Government Buildings
Sports & Recreation Places
Transportation
Workplaces & Offices
Urban Design



Pre-Conference

Tuesday, 7 December & Wednesday 8 December

Intensives. There are six (6) half-day and nine (9) full-day sessions designed to permit in-depth learning and exchange. Additional fees are required.

Topics will include Global Accessible Transport, the International Hospitality Industry, Media and Technology Access, the Norwegian Experiment, IDEO mini-exploration of reinventing the health care experience through design, Web Accessibility for Designers. Please see the website for detailed descriptions of sessions and presenters and venues.

Charrettes or Case Studies offer a new intensely interactive session type that begins with a session during the Pre-Conference days, includes two additional working sessions and a presentation on Saturday. There will be seven (7) options for Charrettes.

- Sample sessions...
- Principles of Universal Design Revisited
 - Sugar Loaf: A Celebration of History, Ecology and Accessibility



Core Conference

Thursday 9 December through Saturday 11 December

In addition to keynote presentations all other sessions are concurrent, either 40 or 90 minutes. See detail on the conference website.

Plenary Sessions. Eighteen (18) topical plenary sessions.

Sample sessions...

- Implementing Universal Design in Five Brazilian Cities
- Office Design for the 21st Century
- International Best Practices in Pedestrian Design
- Universal Design Practices in Japanese Corporations

Working Groups. Seven (7) interactive discussions of a topical area in order to explore the state of the art and emerging issues.

Sample sessions...

- The Visual Language of Art
- Aging in Place, Cultural Parallels & Strategies

Projects. Fifty (50) Project sessions that report on real world experiences.

Sample sessions...

- The European Internet Accessibility Observatory
- Empowerment Games: Participatory Design for Sustainable Public
- Housing in Hong Kong
- Ottawa International Airport

Forums. Twenty-six (26) Forums discuss design research or evolving issues.

Sample sessions...

- A House for the Senses
- Universal Design and Inclusive Education in Brazil
- Inclusive Design in Practice: the UK Experience

Post-Conference

Sunday, 12 December

International Educators’ Forum
Design educators from around the world are invited to participate in the day-long International Educators’ Forum. The 2004 Forum focuses supporting local efforts to integrate universal design into colleges and universities in Brazil and other Latin America countries. Experienced international participants are welcome to participate. Additional fee required.

Latin American Strategic Planning Forum

This all-day session is for Brazilian and other Latin American delegates hosted by UN Global Programme on Persons with Disabilities, CVI-RIO and Adaptive Environments to begin to map a regional action plan for integrating universal design into development and policy. Participants from disability, government and design as well as key strategic partners in international banking, trade organizations, unions and media are invited to participate. Registration required, no fee, transportation provided to off-site location.



Special Features & Events

International Student Design Competition: Exhibit & Awards

Over 150 multi-disciplinary teams have registered to date to design a community center in either Haiti, India or Brazil. They are charged with meeting criteria including the three facets of sustainable design: environmental, economic and social with emphasis on cultural sensitivity and universal design. Finalists will be displayed and winners celebrated in an awards program.

Ron Mace Designing for the 21st Century Awards

Individuals and organizations will be honored for their extraordinary contributions to the field in memory of the beloved ‘father’ of universal design, Ron Mace.

Excellence in Universal Design, Great Places Fit for People: Exhibit & Awards

International design awards program that recognizes design that seamlessly integrates excellence in design and in the experience of all users.

On-site Consultation by the U.S. Access Board

Members of the board and staff will share more than 30 years of experience with delegates. Experts will be available for informal topical sessions on the full range of built environment and technology guidance that the Board has generated. This body is unrivalled in the amount of research and participatory development of design guidelines it has generated.

The Access Board is the lead Federal agency in the United States devoted to accessibility for people with

disabilities. Created over 30 years ago to ensure access to federally funded facilities, the Access Board is a leading source of information on accessible design. Key responsibilities of the Board include:

- developing and maintaining accessibility requirements for the built environment, transit vehicles, telecommunications equipment, and for electronic and information technology;
- providing technical assistance and training on these guidelines and standards; and
- enforcing accessibility standards for federally funded facilities.

Exhibits

A small but premier exhibit area in the Foyer in the Conference Center will feature a range of invited exhibitors and conference sponsors.

Receptions

An opening reception will be held on Thursday evening to honor and thank corporate sponsors. A festive closing reception will bring everyone together on Saturday night. It will feature performances by Brazilian artists with disabilities, local cuisine and time to savor new and old friends.

Professional Credits and Certificates

Professional credits are available to design and other professionals from many countries. Please see the website for details: www.designfor21st.org
Certificates of participations are available to all delegates upon request.

Proceedings

Designing for the 21st Century III Proceedings will be published as an accessible CD-ROM and will include abstracts as well as invited papers and images.

Conference Site & Accommodations

The Core Conference will take place at the Sofitel Rio de Janeiro, a four star hotel and conference center. Located in front of the famous Copacabana beach and close to Ipanema beach, the hotel features 355 rooms and 33 suites, 2 non-smoking floors, International and French cuisine, Atlantis restaurant, Horse’s Neck English pub, 2 swimming pools, fitness center, and a sauna. Many choices of low to mid-price hotels are within blocks of the conference site. Options include a range of room types suitable for families. They are described in detail, including measurements and photos of accessible rooms, on the conference website at www.designfor21st.org

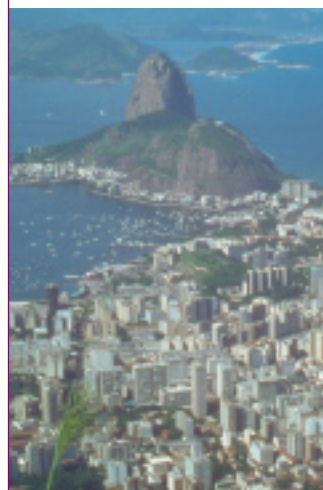
In order to receive conference rates at the Sofitel Rio de Janeiro and selected hotels, reservations need to be made through our official conference travel agent, Grahn Travel: www.designfor21st.org/grahn

Though most sessions and events will take place at the Sofitel, some of the Pre-Conference Sessions and Charrettes and the closing celebration will take place in other locations. Accessible transportation will be provided.



Travel and Tours

Antonio Carlos Jobim International Airport serves Rio de Janeiro and is 20 kilometers/12 miles north of the city. The official conference travel agent, Grahn Travel, can also provide you with travel partners around the world to facilitate air travel. You can also choose to pre-schedule your ground travel from the airport with Grahn: www.designfor21st.org/grahn
Go the conference website for practical suggestions for the traveler to Rio, passport and visa requirements, airlines, options for ground transportation, tours within Rio and further afield, and detailed information about Rio de Janeiro and Brazil can be found at: www.designfor21st.org



Conference Registration Fees

Core Conference Early Registration \$499
Core Conference Late Registration \$599
Core Conference On-Site Registration \$699
Student Registration \$399
One-Day Registration \$299
Charrette Registration \$75-\$150
Pre-Conference Intensive Sessions Half & Full-Day Session Registration \$100-\$150
Post-Conference – Global Educators’ Forum \$75
Registration is based on a first-come, first-serve basis, On-Site Registration will only be available if we have not reached capacity by the end of the Late Registration period. Please be sure to check our website to confirm whether on-site registration is available.

Sponsorships for reduced fees.

The goal of the event is to bring together people across the sharp economic disparities common to our world. We intend to reduce the economic barriers that would normally prevent many of our colleagues in Brazil and other nations across the majority world from participating. We are soliciting both corporate sponsors and organizational partners who can offer sponsorships to delegates to reduce expenses.

Please complete the on-line Sponsorship Eligibility Form registration and eligibility information for sponsorships on the conference website: www.designfor21st.org



374 Congress Street, Suite 301
Boston, MA 02210 USA
617-695-1225 v/tty
617-482-8099 fax
info@AdaptiveEnvironments.org

For more information and to register visit www.designfor21st.org